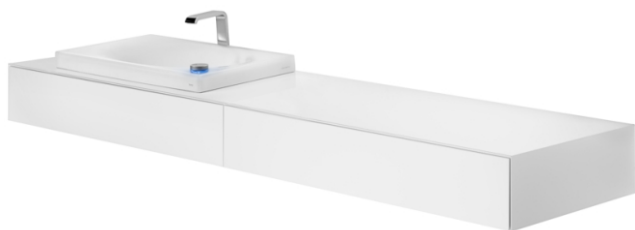


NEOREST SERIES / FURNITURE

Counter cabinet for LE

DE: Waschtischunterschrank
 FR: plan vasque
 IT: pensile sottolavabo
 RU: Шкаф под раковину с выдвигаемым ящиком
 ES: mueble de encimera



CAN BE COMBINED WITH

Sub cabinet	FU10007A
Side cabinet	FU10009A
Rolling container	FU10005A
Mirror	MI10011B-WI

PRODUCT DETAILS

Product code	FU10650A-MW (basin left, two drawers, white)
	FU10650A-MB (basin left, two drawers, black)
	FU10649A-MW (basin right, two drawers, white)
	FU10649A-MB (basin right, two drawers, black)
EAN code	40 50663 09202 3 (basin left, two drawers, white)
	40 50663 09201 6 (basin left, two drawers, black)
	4050663 09204 7 (basin right, two drawers, white)
	40 50663 09203 0 (basin right, two drawers, black)
Size	w:2200xd:600xh:200 (mm)
Weight	110 kg
Colour	white, black
Material	Glossy laquered (2x200g/m ²) and polished, on MDF V100
Additional information	Electronic push-to-open mechanism,
	Integrated LED light (internal and external)

Weights and measurements shown may be subject to small variations or are indicative.

TECHNICAL DRAWINGS

