

## Healthcare Spaces in Your Own Garden

A quick and affordable option for outpatient care: Equipped with TOTO WASHLET, the senior module from WOLF System GmbH helps people close the gap in healthcare.



*The healthcare gap is growing, affecting all of us in our aging society. Increasing numbers of people require healthcare as they age, but there aren't enough nurses and healthcare facilities to cover this growing demand. What does this mean for our relatives in need of care – and for us? What solutions are available to close this gap? Prominent construction firm Wolf System GmbH teamed up with Prof Dr Horst Kunhardt from the Applied Health Sciences Department at Deggendorf Institute for Technology and other well-known companies – including Japanese sanitary expert TOTO – to find answers.*

Their efforts have paid off. This effective business-industry collaboration developed a practical solution for short-term healthcare that you can put in your garden: a fully accessible modular structure that maximises comfort and care with a minimal footprint.

### Rethinking outpatient care

If families want to care for their loved ones but lack the space at home, this prefabricated and completely accessible senior module offers a quick, practical solution. Available in a variety of different sizes to fit in the garden, each is designed to provide healthcare in the home environment. The expert team behind its development carefully considered every aspect of the Senior Module, incorporating practical features and details to simplify everyday care while greatly promoting the autonomy of the person in need of assistance. This detached space ensures that everyone has their own privacy.

### Product Related Inquiries

#### Press office UK:

INDUSTRY PUBLICITY

Phone:

+44 (0) 20 8968 8010

hq@industrypublicity.  
co.uk

#### Press office Europe:

Anja Giersiepen

anja.giersiepen@  
toto.com

#### TOTO on the Internet:

eu.toto.com

### Integrated care for the best possible results

The well-being of care-dependent individuals is at the heart of the concept of “integrated care excellence”. Each Senior Module is adapted to each individual situation to ensure safety and the best-possible care, whether through family or outpatient providers. Practically every element is designed to assist people in their everyday lives. The height-adjustable stove, for example, has a monitor and automatic shut-off feature to provide greater safety while cooking. The innovative ceiling lamps ensure that help arrives quickly in the event of a fall. The supplied hospital bed has a swivel function and anti-bedsore mattress, which helps people get up without stumbling. An overhead lift is available if it’s not possible for the person to stand on their own. This can also be used for training purposes or rehabilitation exercises. The fully accessible shower has a comfortable body air dryer, which promotes people’s personal autonomy while making hand towels unnecessary. The entire structure is digitally connected to care providers, reducing the bureaucracy involved in outpatient care – allowing providers to dedicate more time to people who need it.

### Comfort, hygiene and greater autonomy

The accessible bathroom with the height-adjustable washbasin and shower seat also features TOTO WASHLET. This allows people with limited mobility and those requiring care to use the toilet independently – delivering a pleasant and soothing experience. People can operate every WASHLET feature with the remote control, making it easier to use the toilet on their own. WASHLET also ensures the greatest possible cleanliness and hygiene thanks to the intimate cleansing feature, which uses fresh, warm water. The automatic cleansing and drying features reduce toilet paper use to a minimum. “This is a great benefit to people with limited mobility. It gives them greater autonomy in their everyday lives,” explains TOTO’s Hubertus Brüggemann.

Düsseldorf, October 24

Reprint free of charge/Copy requested

1 The Senior Module is a prefabricated, fully accessible bungalow with a small footprint that makes it ideal for the garden. The carefully selected furnishings and equipment inside make it easier to provide care while promoting the autonomy and privacy of care-dependent people. TOTO WASHLET is part of this practical solution, which aims to close the healthcare gap. Photo: Wolf System GmbH

2 The accessible bathroom features a height-adjustable washbasin with integrated handles, a shower seat with handrail, a full-body air dryer and TOTO WASHLET. By automatically cleaning and drying the user, WASHLET reduces toilet paper use to a minimum. Photo: Wolf System GmbH

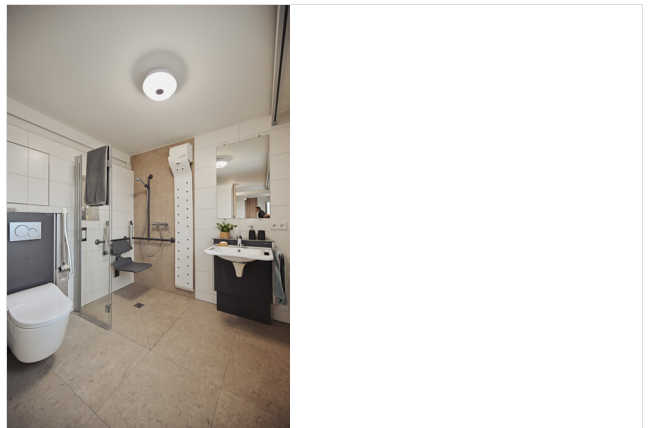
3 The open floor plan is completely accessible and optimised for providing care. The construction standard is the ready-concept to prepare age-appropriate living spaces from the German Federal Institute for Research on Building; Urban Affairs and Spatial Development (BBSR). Photo: Wolf System GmbH

4 Each Senior Module has a height-adjustable hospital bed, including a lift to help people stand up and an overhead lift that extends into the bathroom. Photo: Wolf System GmbH

1.



2.



3.



4.



Headquarters & Registered Office  
**TOTO Europe GmbH**  
 Zollhof 2  
 40221 Düsseldorf  
 Germany

UK registered office  
 London concept store  
 (Registered in England and Wales  
 as an Overseas Company,  
 number RC029181)  
 140-142 St. John Street  
 London EC1V 4UA, UK

P +44(0)207 831 7544  
 F +44(0)207 5666 322  
 teu.london@toto.com  
 gb.toto.com

The Bank of Tokyo-  
 Mitsubishi UFJ Ltd.  
 Sort Code 6001  
 Accounts No. 3301-GBP-CUA 284422

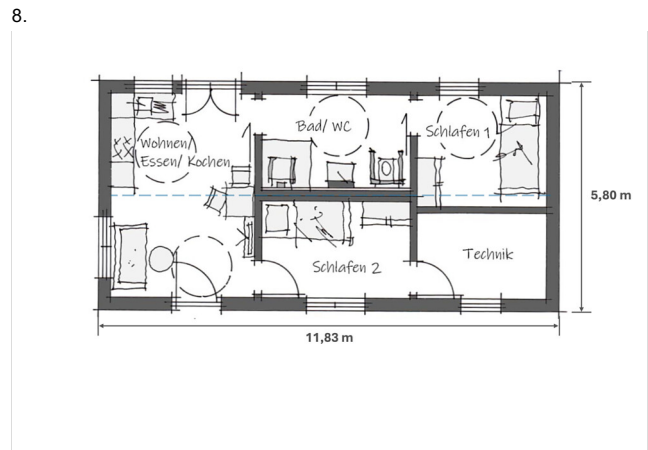
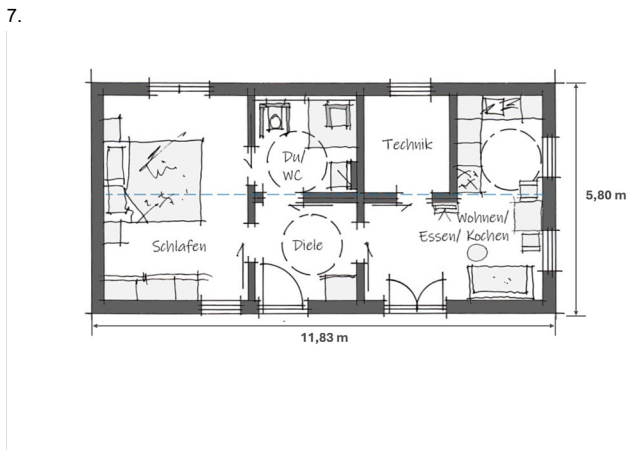
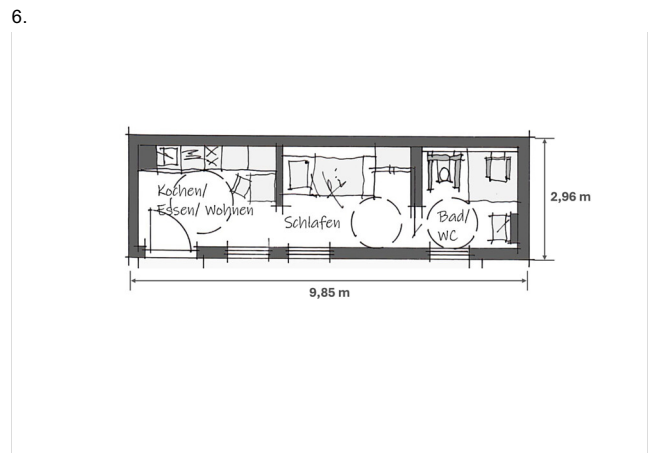
SWIFT BIC: BOTKGB\*L  
 IBAN: GB94 BOTK 6001 0900 2844  
 22  
 UK VAT No. 984 7767 44

5 Every aspect of transport and installation is also accounted for. A standard lorry can move these compact modules, even in areas with limited space. A crane can ensure installation to gardens behind buildings. Simple electrical, water and wastewater connections and the use of screw-in foundations makes on-site installation easier. Photo: Wolf System GmbH

6 The Senior Module for one person maximises comfort and care with a minimal footprint – and it's ideal for a residential garden. Sketch: Wolf System GmbH

7 Available in a variety of different sizes, the Senior Module is designed to provide healthcare in the home environment. This ComfortSuite DUO version includes a separate bedroom with double bed. Sketch: Wolf System GmbH

8 The Senior Module ComfortSuite DUO has two separate bedrooms. Like the other versions, it offers fully accessible spaces to shower, eat, sleep and relax – with many features designed to assist with care and promote autonomy in people's everyday lives. Sketch: Wolf System GmbH



### About TOTO Europe

TOTO, one of the world's leading sanitary ware companies, has an unwavering focus on people and their well-being. Established in Kitakyushu, Japan in 1917, TOTO has been developing, producing and marketing its comprehensive high-end bathroom concepts for the European market since 2009. The company aims to create a new attitude towards life through regeneration, comfort and hygiene, integrating technologies into their product designs in a smart, nearly invisible way. Japan's leading manufacturer in the sector, TOTO offers a comprehensive range of products including ceramic sanitary ware, faucets and accessories. The company can now look back on over 40 years of developing and manufacturing WASHLET and has sold over 60 million units worldwide to date. TOTO supports the development of a fully emission-free society and is very committed to sustainability: By joining the RE100 initiative, TOTO Group will convert all of its facilities to power from sustainable energy sources by the year 2040. The company also received certification from the Science Based Targets Initiative (SBT) to reduce greenhouse gases in line with the Paris Agreement, and to systematically cut CO<sub>2</sub> emissions further on this basis. TOTO employs 36,000 people world-wide.

Read more about TOTO online: [eu.toto.com](https://eu.toto.com)